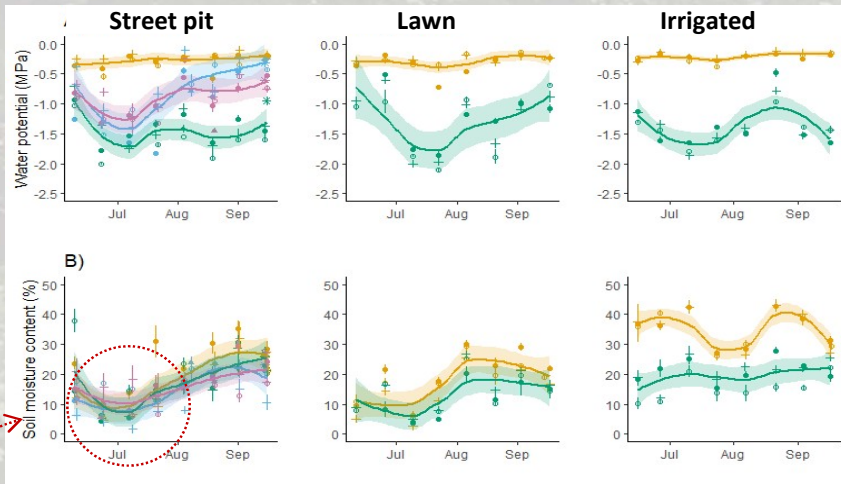


Trees in city, pampered or parched?

Kaisa Rissanen (kaisaarissanen@gmail.com), Gauthier Lapa, Daniel Houle, Daniel Kneeshaw, Alain Paquette
 Université du Québec à Montréal, Environnement et Changement climatique Canada

24 trees, 4 species, 3 locations in Montreal

3 Dry and hot periods in summer are predicted to become more common
 → Are city trees vulnerable to dry periods?
 → How the tree water status varies between species and locations?



Method

We measured leaf water potential as proxy for tree water status and experienced drought stress.

Results

Dry period in July decreased water potential of all species except for Norway maple. Honey locust, particularly on lawn, showed most negative leaf water potentials → most vulnerable to drought stress?

1

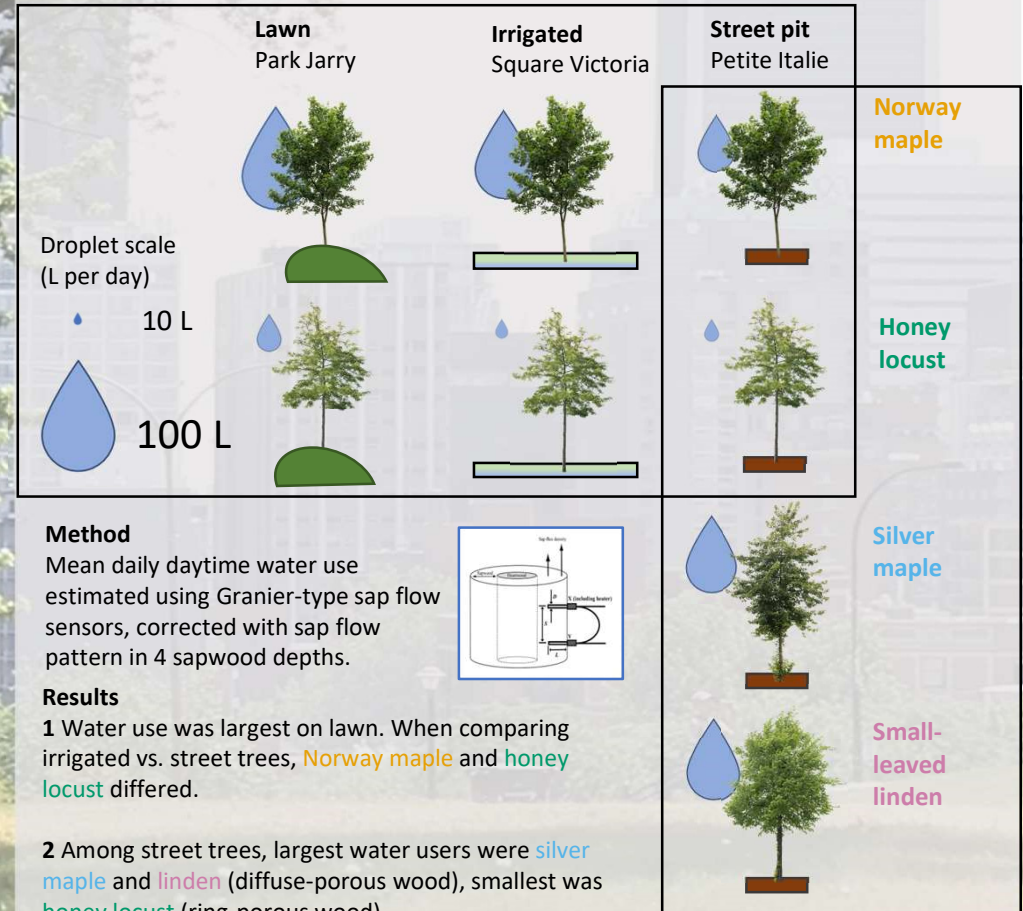
Street trees have lower access to rain water than trees in park

- Do street trees use less water?
- Does irrigation increase water use?

2

Trees species have various water use strategies

- How do 4 common street tree species differ in daily water use?



➤ **Next up:** how environmental variables affect temporal variation of water use among the species and locations?